



Your complete solution for  
**Diesel Particulate Filter Maintenance**



**Eminox**  
GROUP OF COMPANIES



Eminox was established in 1978 and has over 30 years' experience in manufacturing emissions reduction technologies.

Our pioneering exhaust aftertreatment systems and market-leading, patented cleaning technologies for diesel particulate filters are widely used by many OE vehicle manufacturers.

All our new and exchange filters have passed stringent functional and quality tests ensuring reliable, high quality solutions in emissions compliance.



Good value and quality-based replacement parts are a constant requirement for all truck and bus operators.

Eminox's Euro 6 DPF Replacement and Exchange Programmes offer high-quality solutions to meeting your emissions compliance with confidence.

## Are your vehicles future-proof?

Complying to Euro 6 emissions standards is getting more stringent with most European countries looking to replace the traditional smoke test with the latest PTI-PN emissions testing.

If your Euro VI truck, bus or coach operates in the UK and Europe it is essential the Diesel Particulate Filter (DPF) performs efficiently to reduce tailpipe particles, particulate matter (PM), and comply with Euro 6 emissions legislation.

New exhaust emissions testing in the EU is likely to follow in the UK due to a growing number of Low Emission Zones and Clean Air Strategies being introduced to protect public health and ensure a sustainable future for the transport industry.

Using Eminox Replacement and Exchange Programmes assures your emission compliance



### Replacement programme

High quality OEM specification DPF replacement parts

### Remanufacturing programme

High quality OEM specification DPF cleaning

Choose an  
Eminox OE quality  
replacement filter



Buy with confidence

Eminox have developed a range of DPFs that are fully compatible with your Euro 6 vehicle, designed to perform to OE specification and supplied with high quality fitting kits, all backed up by a 3 year unlimited, mileage warranty.

Replacement programme



**Unlimited mileage, 3-year warranty**

Ensuring your OE quality, like-for-like products meet your operational needs



**All DPFs supplied with OE compatible fitting kit**

Eminox fitting kits are included in the price of the DPF and are fully OE compatible which will save you £££'s



**Fully type approved**

Type approval ensures the DPF performs to OE specification and achieves full emissions compliance



**Tough cordierite and silicon carbide substrates**

Robust construction to withstand arduous duty cycles

**EURO6**

**Compliant to Euro 6 regulations**

Precious metal coatings such as platinum and palladium are used in all Eminox replacement DPFs. This is equivalent to OE performance and durability.



**High-grade stainless steel canister**

The premium material improves long term durability and resists corrosion

Contact us  
for a quote  
today





## DAF



### Engine Types:

MX-11 PX-5  
MX-13 PX-7



### Model Types:

CF Series XF Series  
LF Series

## SCANIA



### Engine Types:

DC07 DC13  
DC09 DC16  
DC11



### Model Types:

G Series R Series  
L Series S Series  
P Series T Series



### Model Types:

Citywide K Series  
Interlink N Series  
C Series Touring  
F Series

## MERCEDES



### Engine Types:

OM470 OM934  
OM471 OM936  
OM473



### Model Types:

Actros Axor  
Antos Econic  
Arocs Unimog  
Atego



### Model Types:

Citaro Turismo  
Integro Tourino  
Intouro Travego

## MAN



### Engine Types:

D0834 D2676  
D0836 D3876  
D2066



### Model Types:

ND Series NL Series  
NG Series TG Series



### Model Types:

Lions City  
Lions Coach

Simply tell us your OE cross reference and we'll identify the right filter for you

## VOLVO



### Engine Types:

D8      D13  
D11      D16



### Model Types:

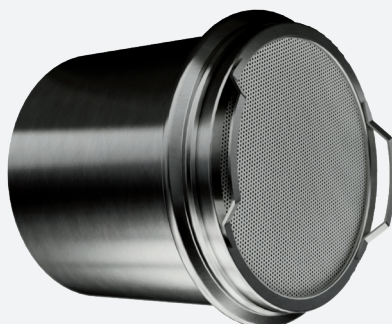
FE      FL  
FH      FM



### Model Types:

B7      B11  
B8      B13  
B9

## RENAULT



### Engine Types:

11L      16L  
13L



### Model Types:

C Series   T Series  
K Series



### Model Types:

8900      9500

## IVECO



### Engine Types:

Cursor 9      Tector 5  
Cursor 11      Tector 7  
Cursor 13



### Model Types:

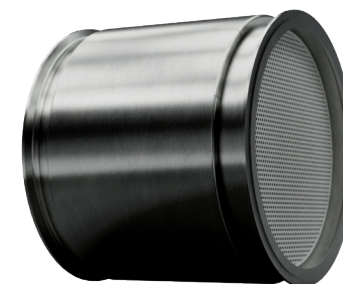
Eurocargo   S-Way  
Stralis      Trakker



### Model Types:

Crossway

## CUMMINS



### Engine Types:

B4.5      B6.7



### Model Types:

ADL Enviro  
BMC  
Wrightbus

Simply tell us your OE cross reference and we'll identify the right filter for you



Choose  
Ceramex patented cleaning



Does every DPF cleaning company provide all of these quality assured, environmentally responsible and patented processes?

You can rely on us to deliver best practice solutions for your DPF cleaning.

Remanufacturing programme



**Restores the DPF to 95% functionality**

Typically removes 30% more contaminants than competitor cleaning methods, maximising fuel economy from reduced back pressure



**100,000+ truck and bus DPFs cleaned per year**

Patented knowhow with high capacity which follows accredited procedures



**Xpurge® uses deionised water for extended life**

Extends the life and prevents catalyst poisoning



**Veritex® light inspection technology uses visual and infrared light tests**

Ensures filter ceramic integrity verifying no cracks, exotherm or blockages remain



**Flexpurge technology for light commercials**

DPF cleaning to avoid the expensive replacement of 'sealed for life' filters



**Highest standards of automotive quality.  
ISO 14001, ISO 9001 certified**

Verified OEM standards followed to deliver consistent quality.



**Certified recycling and waste management**

Safe and controlled waste management supports your sustainability and ESG goals

Contact us  
for a quote  
today

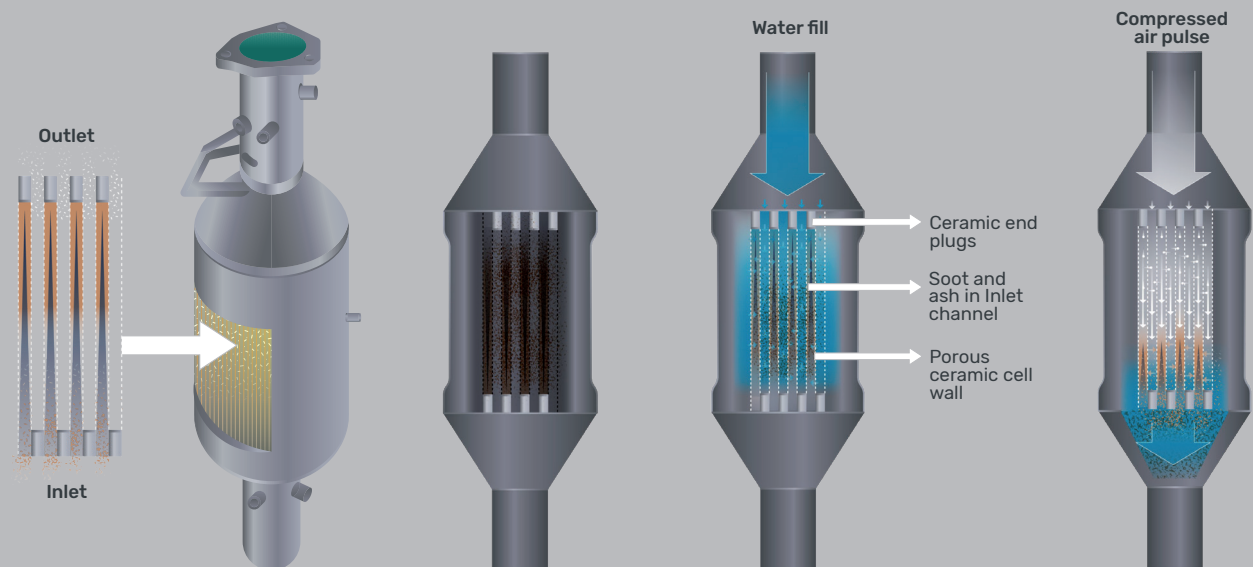
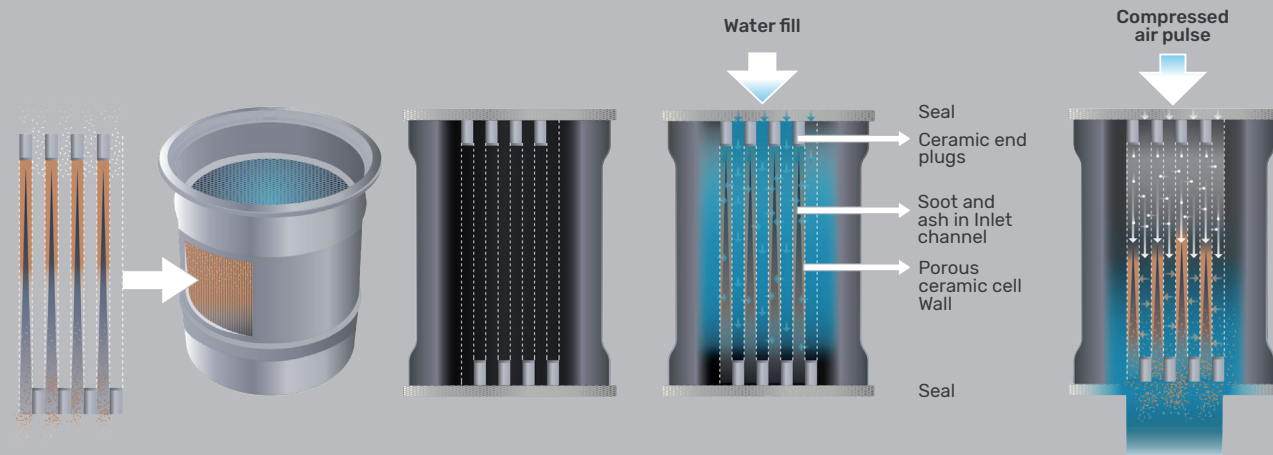


## Xpurge® & Flexpurge™ Cleaning Technology

Xpurge and Flexpurge is a patented process in which the DPF cells are filled with de-ionised water and a pulse of compressed air is injected through the filter.

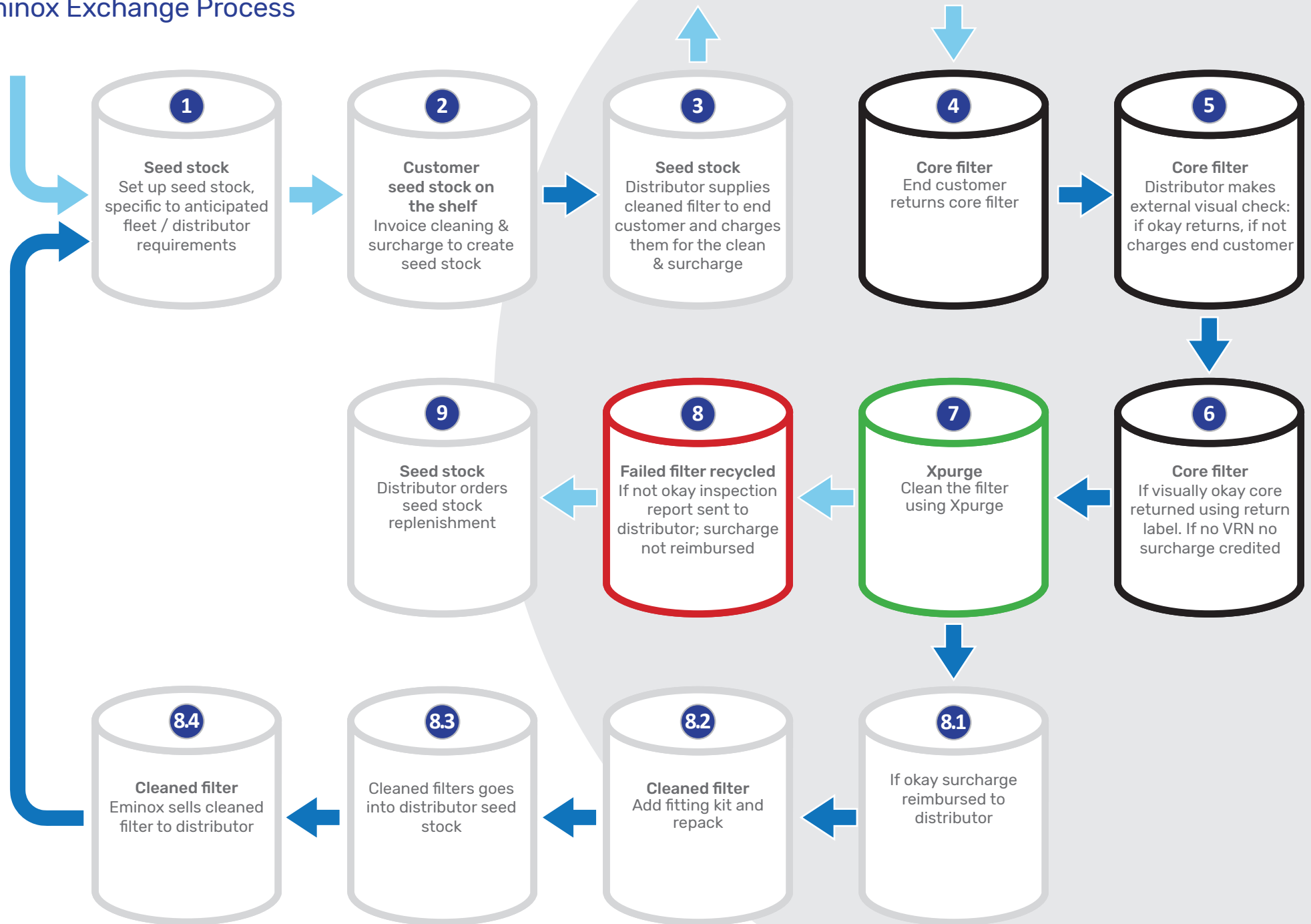
The water forces the compressed air across the porous cell walls to purge the soot and ash from the inlet channels.

The water flushes the purged soot and ash and is safely removed and sustainably processed.





## Eminox Exchange Process





[enquiries@eminox.com](mailto:enquiries@eminox.com) | [eminox.com](http://eminox.com)

003|12|25

**EMx Powered**  
Technologies for a greener planet